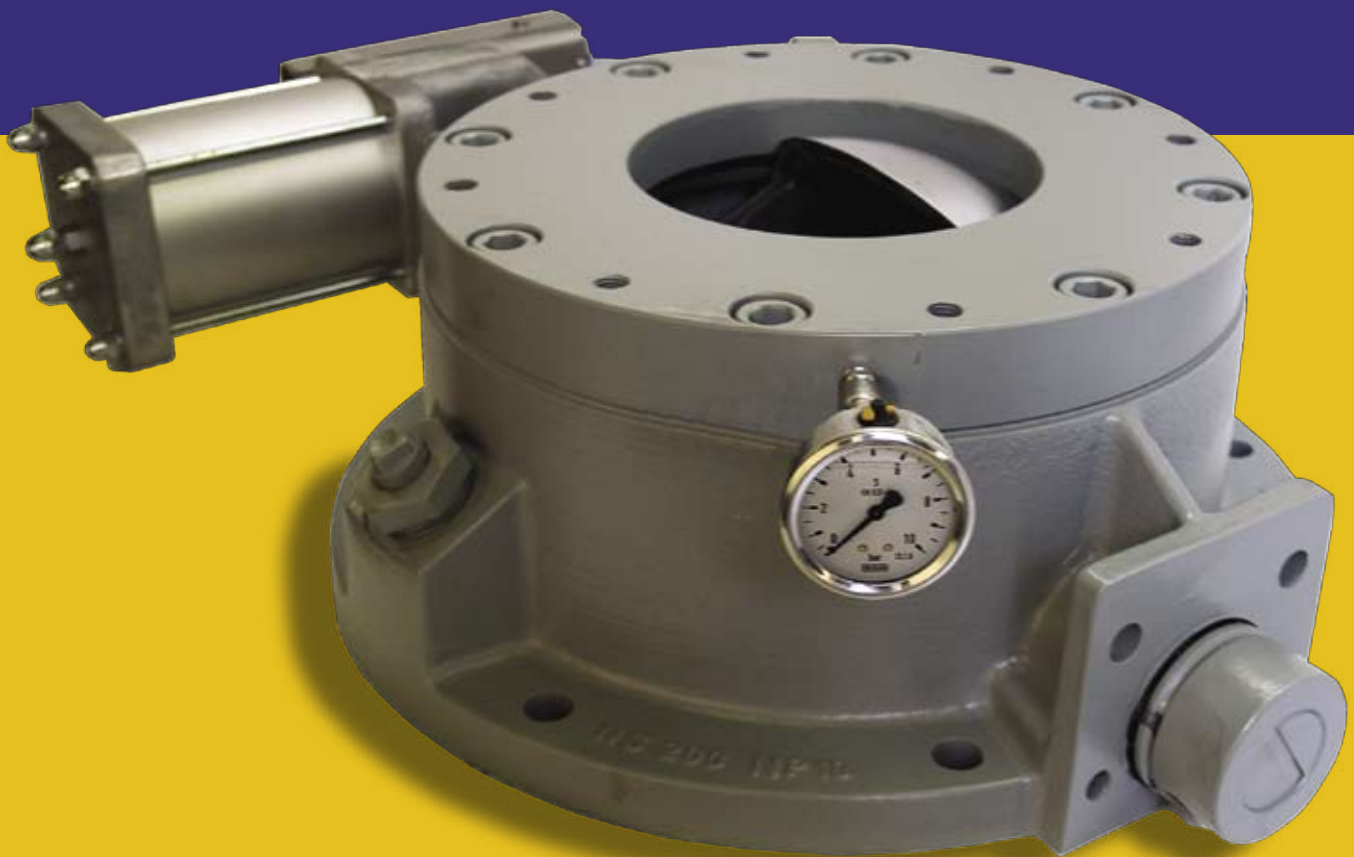


Pneuplan Dome Valve DN100 – DN500



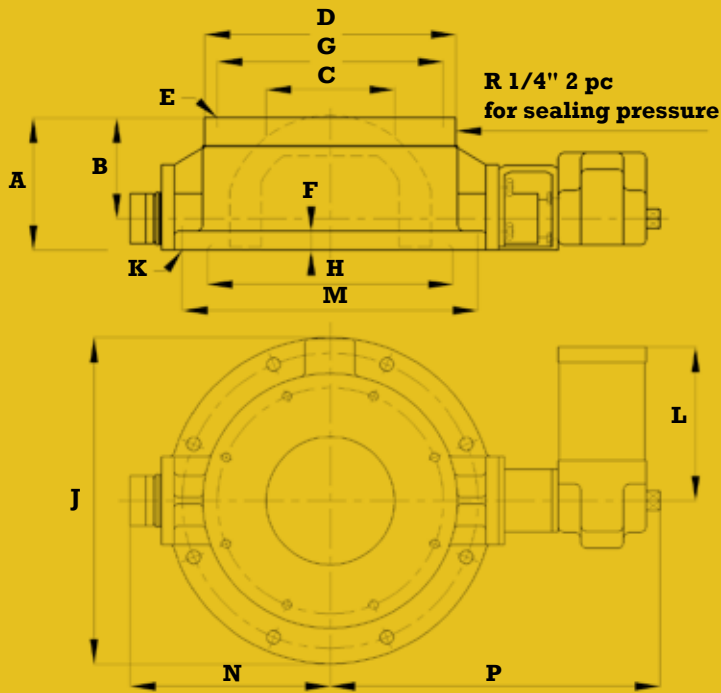
Pneuplan Dome Valve is a high performance special valve and is used all over the world in Material Handling Systems in a wide range of industries. Pneuplan Dome Valves are capable of handling powdery and granular materials like fly ash, bottom ash, boiler bed sand and limestone. The Pneuplan Dome Valve has a simple construction and automatically inflating sealing mechanism which operates with compressed air ensuring minimized wearing. The dome valve closes also through the material, opening the material flow only a quarter turn from fully closed to fully open. The design of Pneuplan Dome Valve makes it extremely reliable and easy to maintain, providing long maintenance intervals.

Benefits of the Pneuplan Dome Valve

- Simple and reliable construction
- Full opening for material flow
- Opening and closing through the material flow
- Long operating life
- Copes with high temperature materials
- Construction pressures up to 64 bar
- No moving wear parts
- Low maintenance

Extremely reliable Pneuplan Dome Valve for your valuable process.

Dome valves, main dimensions



Technical specifications

- nominal pressure 10 bar
- dome material Stainless Steel (AISI 316,CF-8M)
- body cast iron or construction steel
- temperature max 200 degrees
- pneumatic actuator
- limit valve for sealing pressure

Special Construction:

- top/bottom adaptor
- water cooling (max 300 degrees)

Optional equipment

- solenoid valves, pressure switches, limit switches

Dimensions (mm)

Valve DN	A	B	Ø C	Ø D	E	F	Ø G	Ø H	Ø J	K	L	Ø M	N	P	Weight Kg
100	180	88	105	250	M16 8 pc, deep 30	18	220	203	340	Ø 22 8pc	290	295	211	463	43
150	201	108	154	320	M12 8 pc, deep 20	35	240	290	430	Ø 22 8pc	290	380	272	534	94
200	211	161	204	400	M16 8 pc, deep 40	30	360	390	520	Ø 22 8pc	290	470	318	525	125
250	428	208	250	600	M20 12 pc, deep 40	37	350	425	640	Ø 26 16pc	355	590	390	712	330
300	363	238	305	580	M20 16 pc, deep 40	43	460	556	780	Ø 26 16pc	355	700	425	752	400
400	426	290	410	677	M24 16 pc, deep 50	38	565	661	895	Ø 26 16pc	563	840	552	1026	444
500	648	358	500	890	M39 20 pc, deep 70	75	670	850	1150	Ø 38 28pc	563	1040	675	1236	1600

